

## UI Old Town Substation Rebuild

### Project Overview

United Illuminating's (UI's) Old Town Substation has been located on Kaechele Place in the City of Bridgeport, Connecticut since the 1960's. The Substation serves approximately 17,000 customers in the Greater Bridgeport area and is connected to the regional electrical grid via Eversource Energy's 115-kV transmission lines, which traverse UI's property.

To assure continued reliable electric service to these customers, UI is proposing to rebuild the Old Town Substation to meet current design standards which will improve reliability for the customers it serves. The new facility would be located adjacent to the current site on Kaechele Place in Bridgeport, Connecticut.

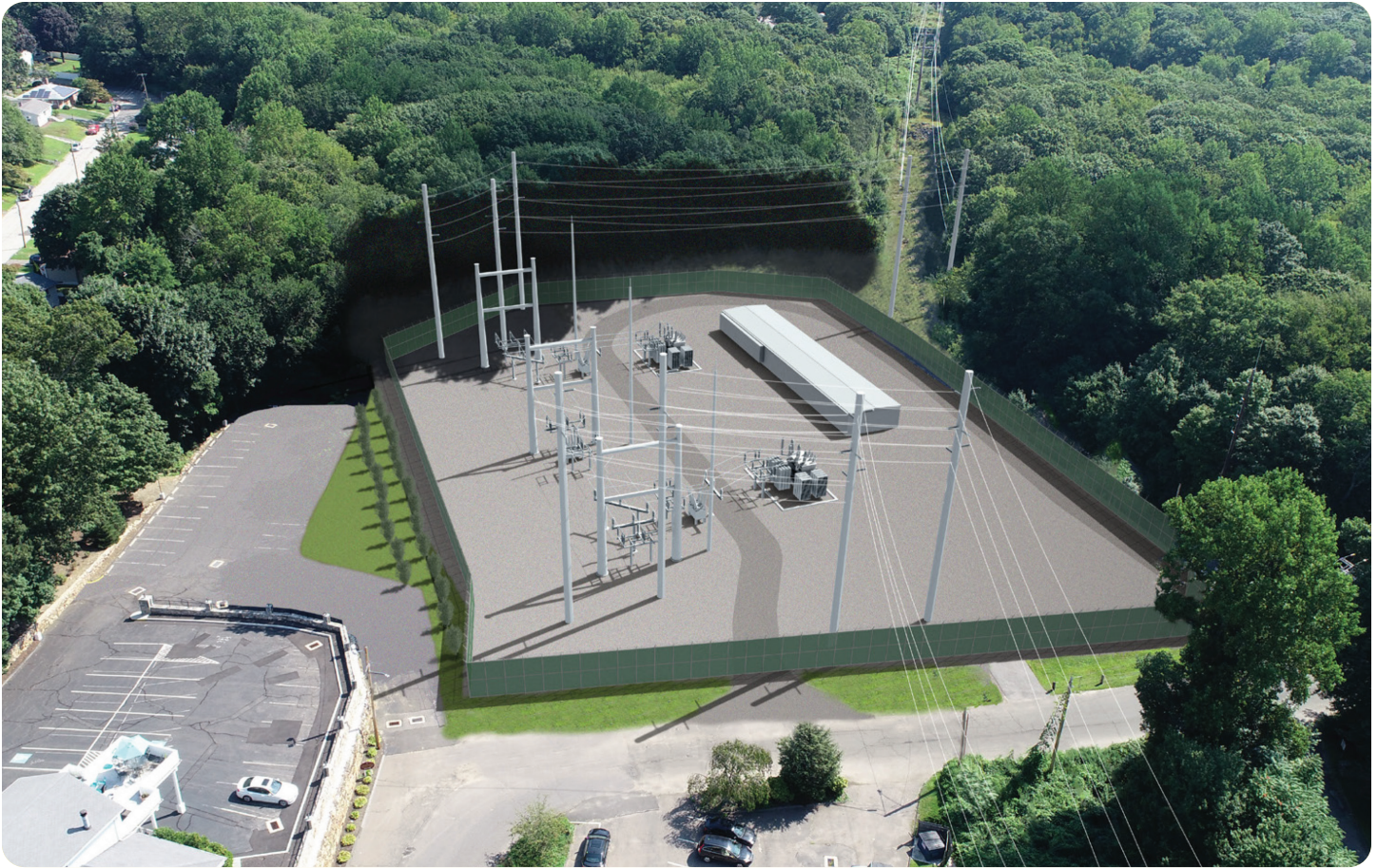
### Project Purpose and Need

After thoroughly assessing the current condition of transmission and substation utility infrastructure in the Greater Bridgeport area, UI determined that the existing Old Town Substation's system reliability and performance would not meet future system performance requirements due to aging infrastructure and outdated equipment. Alternate solutions were carefully reviewed and considered during the assessment. UI concluded that rebuilding the Old Town Substation would be the optimal solution for cost effectively ensuring long-term electric reliability in this service area.



Before





After

### Project Scope

- A new transmission and distribution substation will be constructed on adjacent property owned by UI.
- The existing 115-kV transmission lines will be rerouted into the new substation.
- Public outreach will be conducted via public information meetings, project fact sheets, and website updates.

### Benefits to the Region

- The new substation will provide long term reliability to the local region.
- The new substation will also be designed to accommodate future load growth.

**Project Information Line:** 1.888.843.3697

**Refer to:** UI Old Town Substation Rebuild

**Email:** outreach@uinet.com

### Estimated Timetable *(subject to change)*

Expected Initial Field Work: Q1 2026

Connecticut Siting Council  
Application Filing: Q2 2020

Expected Construction  
Start: Q2 2026

In-Service Date: Q2 2028

### Project Location

Municipality: Bridgeport

County Impacted: Fairfield

### Permits/Consultations:

- Connecticut Siting Council, Certificate of Environmental Compatibility and Public Need
- City of Bridgeport
- Connecticut Department of Energy and Environmental Protection
- U.S. Fish & Wildlife Service State Historic Preservation Office